



DASON STAINLESS PRODUCTS CO.
1773 Elizabeth Avenue, Rahway, NJ 07065
Tel: (732) 382-7272
www.DasonStainless.com

Since 1959, when Dason Stainless was established, on-time delivery of quality products has been our first priority. As a customer-oriented company, Dason responds quickly and accurately to every situation from sales to shipping, insuring customer satisfaction.

Dason 150/1M screwed fittings are used for standard pressure service. General dimensions conform to MSS-SP-114. Pipe threads conform to ASME B1.20.1.

Dason 3000 lb. and 6000 lb. screwed and socketweld fittings conform to ASME B16.11 dimensions. Socketweld reducer inserts conform to MSS-SP79. Threads conform to ASME B1.20.1 specifications. All Dason 3000 lb. and 6000 lb. fittings are identified with the Dason trademark, nominal pipe size, pressure rating, alloy, and heat code identification.

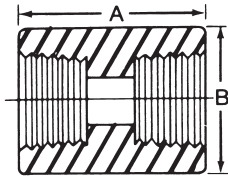
All Dason fittings are manufactured in the USA from solid bar conforming to ASME SA 182 where applicable.

THREADED FITTINGS

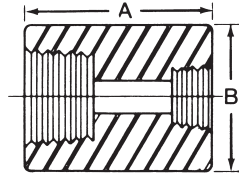
3000 AND 6000 POUND

DIMENSIONS CONFORM TO ASME B16.11

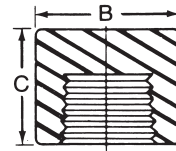
MACHINED FROM SOLID BAR MATERIAL



Coupling



Reducing Coupling



Cap

3000 POUND

SIZE	1/8	1/4	3/8	1/2	3/4	1	1 1/4	1 1/2	2	2 1/2	3	4
A	1 1/4	1 3/8	1 1/2	1 7/8	2	2 3/8	2 5/8	3 1/8	3 3/8	3 5/8	4 1/4	4 3/4
B	3/4	3/4	7/8	1 1/8	1 3/8	1 3/4	2 1/4	2 1/2	3	3 3/4	4 1/4	5 1/2
C	3/4	1	1	1 1/4	1 7/16	1 5/8	1 3/4	1 3/4	1 7/8	2 3/8	2 9/16	2 11/16

6000 POUND

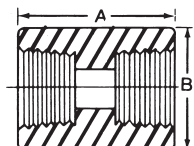
SIZE	1/8	1/4	3/8	1/2	3/4	1	1 1/4	1 1/2	2	2 1/2	3	4
A	1 1/4	1 3/8	1 1/2	1 7/8	2	2 3/8	2 5/8	3 1/8	3 3/8	3 5/8	4 1/4	4 3/4
B	7/8	1	1 1/4	1 1/2	1 3/4	2 1/4	2 1/2	3	3 3/4	4 1/4	5	6 1/4
C	7/8	1 1/16	1 1/16	1 5/16	1 1/2	1 11/16	1 13/16	1 7/8	2	2 1/2	2 11/16	2 15/16

HALF COUPLINGS ARE APPROXIMATELY ONE HALF LENGTH OF FULL COUPLINGS

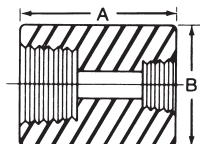
THREADED FITTINGS

150 POUND

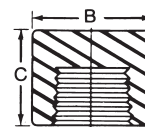
DIMENSIONS CONFORM TO MSS SP-114 CLASS 1000
MACHINED FROM SOLID BAR MATERIAL



Coupling



Reducing Coupling

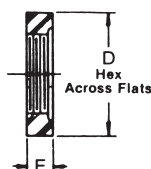


Cap

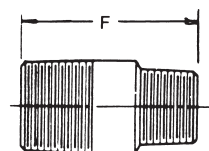
SIZE	1/8	1/4	3/8	1/2	3/4	1	1 1/4	1 1/2	2
A	1	1 1/16	1 3/16	1 1/2	1 1/2	1 11/16	2	2 1/8	2 1/2
B	9/16	3/4	7/8	1 1/16	1 5/16	1 5/8	1 7/8	2 1/4	2 3/4
C	1 1/16	3/4	13/16	15/16	1 1/8	1 5/16	1 5/8	1 5/8	1 3/4

HALF COUPLINGS ARE APPROXIMATELY ONE HALF LENGTH OF FULL COUPLINGS

Locknut



Swaged Reducing Nipple

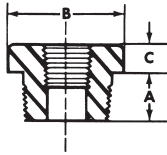


SIZE	1/8	1/4	3/8	1/2	3/4	1	1 1/4	1 1/2	2
D	7/8	7/8	1 1/16	1 3/16	1 1/2	1 3/4	—	—	—
E	3/16	1/4	9/32	5/16	1 1/32	3/8	—	—	—
F	2	2	2	2	2	2	3	3	3

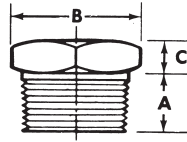
SWAGED NIPPLE AVAILABLE IN ANY COMBINATION OF SCHEDULES AND PLAIN, BEVELED, OR THREADED ENDS.

BUSHINGS AND PLUGS

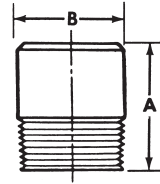
MACHINED FROM SOLID BAR MATERIAL



Hex Bushing



Hex Head Plug



Round Head Plug



Flush Bushing

Hex Bushing

SIZE	1/8	1/4	3/8	1/2	3/4	1	1 1/4	1 1/2	2	2 1/2
A	—	1/2	9/16	5/8	11/16	13/16	7/8	7/8	15/16	1 3/8
B	—	5/8	11/16	7/8	1 1/16	1 5/16	1 3/4	2	2 1/2	3
C	—	5/32	3/16	3/16	1/4	1/4	5/16	3/8	7/16	9/16

Hex Head Plug

SIZE	1/8	1/4	3/8	1/2	3/4	1	1 1/4	1 1/2	2	2 1/2
A	1/2	1/2	9/16	5/8	11/16	13/16	7/8	7/8	15/16	1 3/8
B	7/16	5/8	11/16	7/8	1 1/16	1 5/16	1 3/4	2	2 1/2	3
C	1/4	1/4	5/16	5/16	3/8	3/8	9/16	5/8	11/16	3/4

Round Head Plug

SIZE	1/8	1/4	3/8	1/2	3/4	1	1 1/4	1 1/2	2	2 1/2
A	1 5/8	1 5/8	1 5/8	1 3/4	1 3/4	2	2	2	2 1/2	2 3/4
B	9/16	9/16	3/4	7/8	1 1/16	1 5/16	1 3/4	1 15/16	2 3/8	3

Flush Bushing

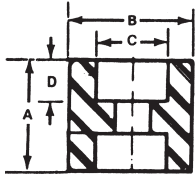
SIZE	1/8	1/4	3/8	1/2	3/4	1	1 1/4	1 1/2	2	2 1/2
A	—	7/16	7/16	1/2	9/16	5/8	11/16	3/4	13/16	15/16

SOCKETWELD FITTINGS

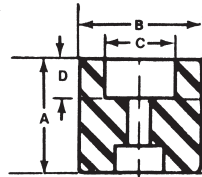
3000 AND 6000 POUND

DIMENSIONS CONFORM TO ASME B16.11

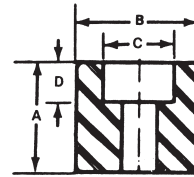
MACHINED FROM SOLID BAR MATERIAL



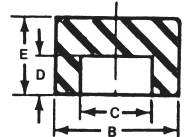
Coupling



Reducing Coupling



Half Coupling



Cap

3000 POUND

BORED FOR USE WITH SCH 40 AND SCH 80 PIPE

SIZE	1/8	1/4	3/8	1/2	3/4	1	1 1/4	1 1/2	2	2 1/2	3	4
A	1	1	1 1/8	1 3/8	1 1/2	1 3/4	1 7/8	2	2 1/2	2 1/2	2 3/4	3
B	3/4	7/8	1	1 1/4	1 1/2	1 3/4	2 1/4	2 1/2	3	3 3/4	4 1/4	5 1/2
C	.420	.555	.690	.855	1.065	1.330	1.675	1.915	2.406	2.906	3.535	4.545
D	3/8	3/8	7/16	1/2	9/16	5/8	11/16	3/4	7/8	7/8	1	1 1/8
E	1 1/16	1 1/16	3/4	7/8	1	1 1/16	1 3/16	1 1/4	1 1/2	1 1/2	1 3/4	1 7/8

6000 POUND

BORED FOR USE WITH SCH 160 PIPE

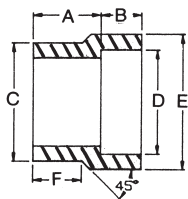
SIZE	1/8	1/4	3/8	1/2	3/4	1	1 1/4	1 1/2	2	2 1/2	3	4
A	1	1	1 1/8	1 3/8	1 1/2	1 3/4	1 7/8	2	2 1/2	2 1/2	2 3/4	3
B	7/8	1	1 5/16	1 1/2	1 3/4	2 1/4	2 1/2	3	3 3/4	4 1/4	5	6 1/4
C	.420	.555	.690	.855	1.065	1.330	1.675	1.915	2.406	2.906	3.535	4.545
D	3/8	3/8	7/16	1/2	9/16	5/8	11/16	3/4	7/8	7/8	1	1 1/8
E	7/8	1 5/16	1 5/16	1	1 1/16	1 1/4	1 5/16	1 3/8	1 5/8	1 5/8	1 7/8	2 1/8

SOCKETWELD REDUCER INSERTS

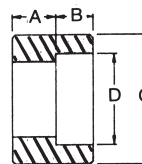
3000 AND 6000 POUND

DIMENSIONS CONFORM TO MSS SP-79

MACHINED FROM SOLID BAR MATERIAL



Type 1



Type 2

3000 lb.

6000 lb.

SIZE INCHES	DIAM. C	DIAM. D	Insert Type	Dimensions				Insert Type	Dimensions			
				A	B	E	F		A	B	E	F
3/8 x 1/4	.675	.555	1	3/4	3/8	7/8	5/8	1	13/16	3/8	1	5/8
1/2 x 3/8	.850	.690	1	13/16	7/16	1 1/16	11/16	1	7/8	7/16	1 1/8	11/16
1/2 x 1/4	.850	.555	1	13/16	3/8	7/8	11/16	1	13/16	3/8	1	11/16
3/4 x 1/2	1.060	.855	1	7/8	1/2	1 1/4	11/16	1	1	1/2	1 3/8	3/4
3/4 x 3/8	1.060	.690	2	5/8	7/16	—	—	1	7/8	7/16	1 1/8	3/4
3/4 x 1/4	1.060	.551	2	11/16	3/8	—	—	2	13/16	3/8	—	—
1 x 3/4	1.320	1.065	1	15/16	9/16	1 1/2	3/4	1	1 1/8	9/16	1 5/8	13/16
1 x 1/2	1.320	.855	2	5/8	1/2	—	—	1	1 1/8	1/2	1 1/2	13/16
1 x 3/8	1.320	.690	2	11/16	7/16	—	—	2	7/8	7/16	—	—
1 x 1/4	1.320	.555	2	3/4	3/8	—	—	2	15/16	3/8	—	—
1 1/4 x 1	1.670	1.330	1	1	5/8	1 7/8	13/16	1	1 3/16	5/8	2	7/8
1 1/4 x 3/4	1.670	1.065	2	11/16	9/16	—	—	2	13/16	9/16	—	—
1 1/4 x 1/2	1.670	.855	2	3/4	1/2	—	—	2	7/8	1/2	—	—
1 1/4 x 3/8	1.670	.690	2	13/16	7/16	—	—	2	15/16	7/16	—	—
1 1/4 x 1/4	1.670	.555	2	7/8	3/8	—	—	2	1	3/8	—	—
1 1/2 x 1 1/4	1.910	1.675	1	1 1/8	11/16	2 1/4	7/8	1	1 3/8	11/16	2 1/2	1
1 1/2 x 1	1.910	1.330	2	11/16	5/8	—	—	1	1 1/8	5/8	2 1/4	1
1 1/2 x 3/4	1.910	1.065	2	3/4	9/16	—	—	2	1	9/16	—	—
1 1/2 x 1/2	1.910	.855	2	13/16	1/2	—	—	2	1 1/16	1/2	—	—
1 1/2 x 3/8	1.910	.690	2	7/8	7/16	—	—	2	1 1/8	7/16	—	—
2 x 1 1/2	2.375	1.915	1	1 1/4	3/4	2 1/2	1	1	1 13/16	3/4	2 5/8	1 9/16
2 x 1 1/4	2.375	1.675	2	13/16	11/16	—	—	2	15/16	11/16	—	—
2 x 1	2.375	1.330	2	7/8	5/8	—	—	2	1	5/8	—	—
2 x 3/4	2.375	1.065	2	15/16	9/16	—	—	2	1 1/16	9/16	—	—
2 x 1/2	2.375	.855	2	1	1/2	—	—	2	1 1/8	1/2	—	—



DASON STAINLESS PRODUCTS CO.
1773 Elizabeth Avenue, Rahway, NJ 07065
Tel: (732) 382-7272
www.DasonStainless.com